

D/C Motor INSTALLATION INSTRUCTIONS

RELIANCE®

TOOLS NEEDED:

- △ (2) Jack Stands
- △ Floor Jack
- △ 3/4 or 19mm Socket & Ratchet
- △ 7/16, 1/2 or 10mm Wrench or Socket

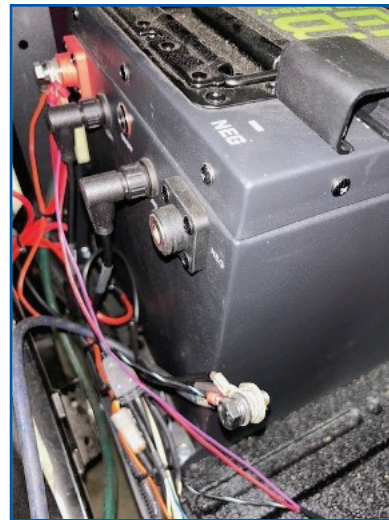
Reliance recommends professional installation. If you choose not to have this product installed by a professional, we highly recommend that you exercise caution, care, and patience when installing this product.

Disconnecting & Removing the Existing Motor

STEP 1

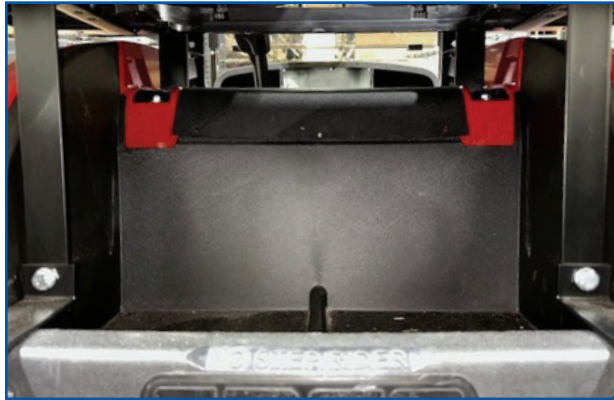
If the vehicle has a Tow/Run switch, place it in Tow, then completely disconnect the power from the battery as shown below.

CAUTION: If the battery is lithium, make sure the battery is completely disconnected and don't just turn it off.



STEP 2

Gain access to the existing motor through the access panel. (If you have a 4-passenger vehicle, you may have to disconnect the rear seat to reach the access panel, if applicable)



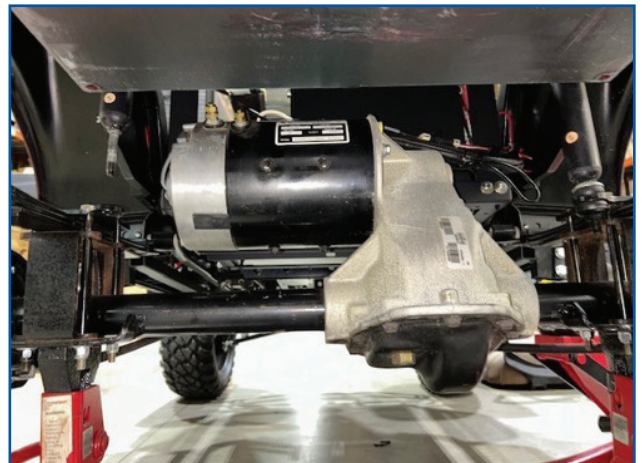
STEP 3

Disconnect the 4 wires on your D/C motor (make sure you label them).



STEP 4

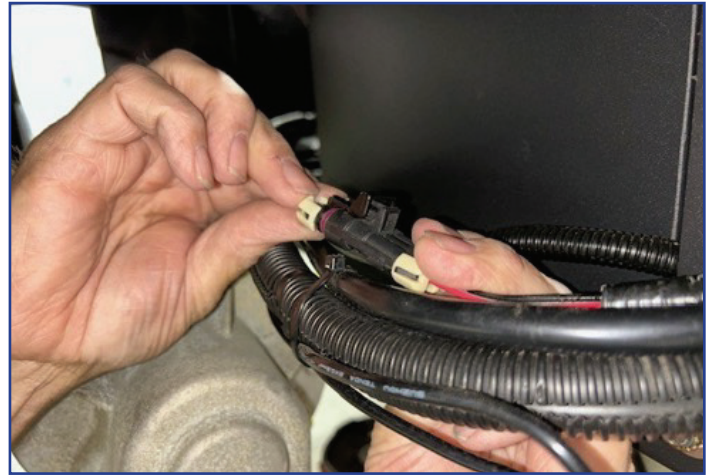
Jack up the rear of the vehicle and place frame on jack stands (make sure not to place them in the way of removing the motor).



CAUTION: Ensure the jack stands are properly positioned and securely supporting the vehicle before proceeding. Also use wheel chocks on the front wheels.

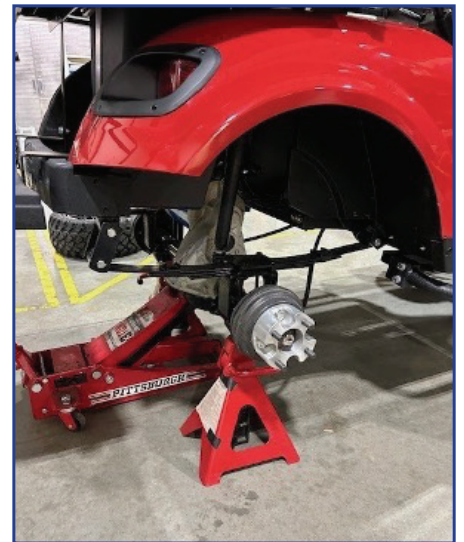
STEP 5

If applicable, remove the speed sensor connection.



STEP 6

Remove both rear wheels using the $\frac{3}{4}$ or 19mm socket and ratchet.



STEP 7

Remove the 3 or 4 bolts (depending on the model) that attach the motor to the transaxle. This usually is either a $\frac{7}{16}$, $\frac{1}{2}$ inch or 10mm hex head bolt.

STEP 8

Position the floor jack under the motor as close as you can.



CAUTION: The average weight of a golf cart motor is approximately 100 lbs. It is strongly recommended that a second person assists with the removal to ensure the process is performed safely.

CAUTION: The average weight of a golf cart motor is approximately 100 lbs. It is strongly recommended that a second person assists with the removal to ensure the process is performed safely.

STEP 9

Slide the motor off the transaxle onto the floor jack.



STEP 10

Once the motor is on the floor jack, lower it to the ground & dispose of the motor properly.



STEP 11

Leave the floor jack where it is for the installation of the new **Reliance D/C Electric Motor**.

Installing the Reliance D/C Electric Motor

CAUTION: The average weight of a golf cart motor is approximately 100 lbs. It is strongly recommended that a second person assists with the removal to ensure the process is performed safely.

STEP 12

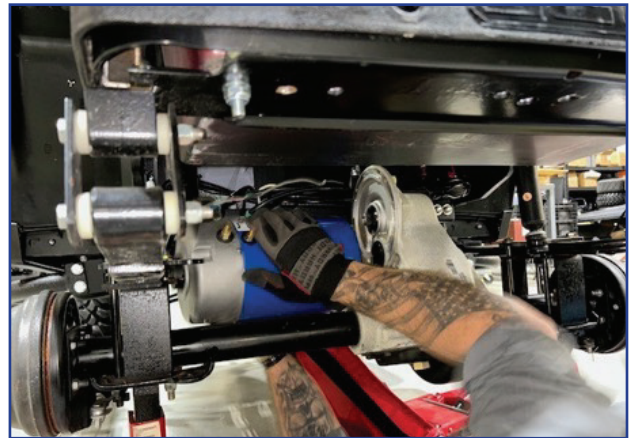
Place the Reliance D/C Electric Motor on the floor jack.

STEP 13

Roll the motor under the transaxle and raise the floor jack up into position.

STEP 14

Lift the motor from the floor jack and slide on to the transaxle. (The motor positioning may need to be adjusted to get the splines to align)



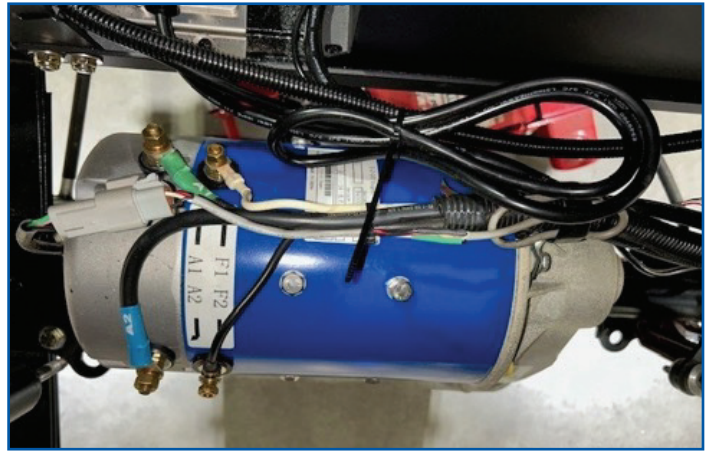
STEP 15

Reinstall the mounting hardware you removed in step #7 using the 7/16, 1/2 or 10mm wrench or socket. You can now remove the floor jack. (When tightening the mounting bolts use a criss cross pattern to make sure the motor goes onto the transaxle straight.)



STEP 16

Reconnect all the motor cables and speed sensor if applicable.



STEP 17

Reconnect the battery and place Tow/Run switch into run, and test if the motor is operational.

CAUTION: NEVER apply more than half throttle to a motor if up on stands.

STEP 18

Reinstall both rear wheels, and torque to manufacturer's specifications.

STEP 19

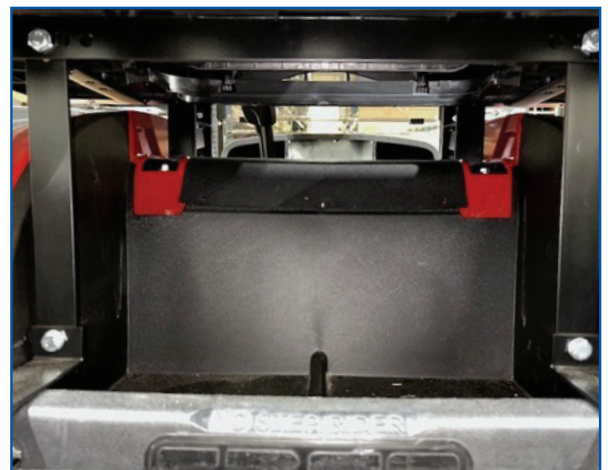
Remove the jack stands and lower the vehicle back down.

STEP 20

Test drive the vehicle to verify correct operation. After test drive re-torque the mounting bolts.

STEP 21

Close the access panel.



INSTALLATION COMPLETE